



# **WELCOME**

Festhalle & live perspectives

**BERNEXPO**



# LIFE PULSATES HERE.

Anyone who has anything to do with BERNEXPO should feel directly...

**THERE IS AN ENORMOUS VARIETY OF POSSIBILITIES  
AND KNOW-HOW HERE TO CONVEY CONTENT OF  
ALL KINDS IN A GRIPPING AND SUSTAINABLE WAY.**

**HOSPITALITY IS LIVED HERE AND PROVEN EVERY  
DAY!**

**WITH OUR RANGE OF EXHIBITION HALLS,  
CONGRESS ROOMS, MULTIFUNCTIONAL HALLS  
AND OPEN SPACES, WHICH IS UNIQUE IN  
SWITZERLAND, WE ARE BOTH A MARKETER AND A  
DEVELOPER AND ENABLER OF LIVE EXPERIENCES.**

**BUT ABOVE ALL, WE ARE A HOSTESS AND  
WELCOME OUR CUSTOMERS AND GUESTS WITH  
OPEN ARMS AND A BIG HEART.**

# VERSATILE PLATFORMS

BERNEXPO offers a competitive, marketable infrastructure that guarantees an attractive mix of events.

## AVAILABLE:

**50'000**

Square meters of  
event space

**4'500**

Square meters of  
conference centers

**100'000**

Square meters of area and thus the  
largest outdoor area in Switzerland

**8**

Halls

**2'500**

Parking places  
(depending on the event)

**25**

Event rooms

**500m**

to the center of Bern and to  
over 300 other restaurants,  
bars and cafés

**300**

Events and  
congresses each  
year

**9'000**

People in the  
multifunctional hall  
STAGE (standing)

# THE HOME OF GREAT EXPERIENCES

With the opening of the Festhalle, BERNEXPO has had a total of six rooms available since spring 2025 on which these four business lines will be implemented:

- **CONGRESSES & CONFERENCES**
- **TRADE FAIRS & SHOWS**
- **CULTURE & EVENTS**
- **LAB & SHOPS**

BERNEXPO sees itself as a vibrant centre for both the general public and a target audience specific to the situation. One place diverse experiences and encounters. A melting pot of innovative concepts from all industries. And a meeting place where you can find what interests you, what brings you forward and brings you joy.



# THIS IS WHERE THE MULTIFACETED LIFE PULSATES

The six playgrounds at BERNEXPO will form a vibrant centre for a wide range of encounters and experiences. Places where everyone is welcome and find on the agenda and in terms of format flexibility what will help you, what interests you and what brings you joy.

## 4 FESTHALLE STAGE

Large congresses or cultural events such as concerts or theatre will take place in the state-of-the-art and flexibly usable multifunctional hall STAGE with up to 9,000 visitors.

## 1 LAB & SHOPS

The Lab: a place of innovation and networking of mobility, nutrition, health and retail. All topics covered here are directly related to BERNEXPO content. This part of the building is also home to the BERNEXPO office.

## 2 3 HALLS

This is where the central trade fair and exhibition facilities for medium-sized and large events are located, as well as another congress centre.

## 5 FESTHALLE FOYER

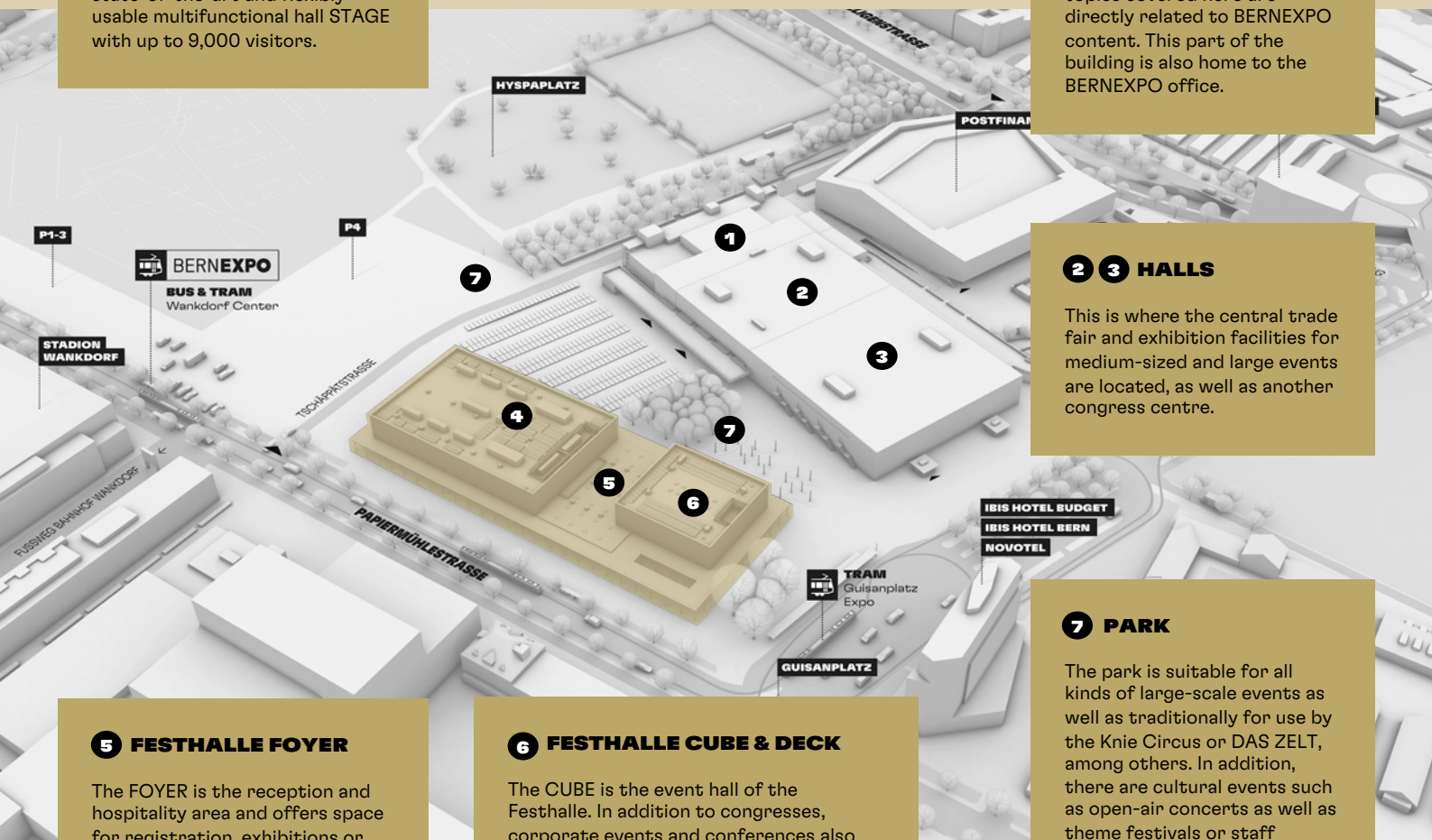
The FOYER is the reception and hospitality area and offers space for registration, exhibitions or catering.

## 6 FESTHALLE CUBE & DECK

The CUBE is the event hall of the Festhalle. In addition to congresses, corporate events and conferences also take place here, as well as shows, exhibitions or smaller concerts for up to 1,200 people (seated). On the upper floors, eight break-out rooms in the DECK impress with state-of-the-art infrastructure and access to the accessible roof terrace.

## 7 PARK

The park is suitable for all kinds of large-scale events as well as traditionally for use by the Knie Circus or DAS ZELT, among others. In addition, there are cultural events such as open-air concerts as well as theme festivals or staff parties in combination with the use of indoor spaces. The park also includes the large area between the new building and the BERNEXPO halls with water features, seating and catering facilities.





# CAPACITY OVERVIEW

ROOM INFORMATION					CAPACITIES							TECHNICAL INFO		
LOCATION	FLOOR	HEIGHT IN METER	MAX. CON-STRUCTION HEIGHT	AREA IN SQUARE METER	STANDING	SEATED	SEMI-NAR	BANQUET	U SEATING	BLOCK SEATING	CABARET SEATING	STAND	PAYLOAD IN KILOGRAMS PER SQUARE METER	CEILING SUSPENSION
FESTHALLE – BUILDING 4/5/6														
STAGE – Multifunctional hall	GF	18	7.0	4631	9000 Incl. Staff	4100	-	round = 1'400, square/long = 2'000	-	-	4'100	2832	1'500kg/m2	40kN (Axis 20-25) 20kN (Axis 14-20)
CUBE (total)	GF	13	3.0	1305	2345	1200	600	round = 400, square/long = 600	-	-	-	-	500kg/m2	10kN
CUBE (split)	GF	13	3.0	652	A: 900 B: 1500	600	300	round = 200, square/long = 300		-	-	-	500kg/m2	10kN
Foyer	GF	6.5	3.0	2000	4000	-	-	-	-	-	-	-	500kg/m2	3kN
DECK (total)	3. Floor	5.2	3.0	1476	800	300	200	-	-	-	-	-	500kg/m2	3kN
DECK 1-4	3. Floor	5.2	3.0	416	300	300	180	round = 352, square/long = 288	-	-	-	-	500kg/m2	3kN
DECK 5-8	3. Floor	5.2	3.0	416	300	300	180	round = 352, square/long = 288	-	-	-	-	500kg/m2	3kN
DECK 1-2	3. Floor	5.2	3.0	208	300	154	128	square = 92	54	-	-	-	500kg/m2	3kN
DECK 3-4	3. Floor	5.2	3.0	208	300	154	128	square = 92	54	-	-	-	500kg/m2	3kN
DECK 5-6	3. Floor	5.2	3.0	208	300	154	128	square = 92	54	-	-	-	500kg/m2	3kN
DECK 7-8	3. Floor	5.2	3.0	208	300	154	128	square = 92	54	-	-	-	500kg/m2	3kN
DECK 1, 4, 5, 8	3. Floor	5.2	3.0	103	300	90	48	square = 30	30	-	-	-	500kg/m2	3kN
DECK 2, 3, 6, 7	3. Floor	5.2	3.0	105	50	50	48	square = 30	30	-	-	-	500kg/m2	3kN
VIP-Lounge Incl. terrace	2. Floor	3.8	3.0	725	300 (Gallery 200)	252	-	round = 80, square/long = 180	-	-	-	-	500kg/m2	3kN
Studio "Suite" Incl. terrace	2. Floor	4.65	3.0	190	50	30	16	-	18	12	-	-	500kg/m2	-
Artists' dressing room	UG										-	-	-	-
BUILDING 1														
Hall 1.2	1. Floor			3620	-	-	-	-	-	-	-	-	1000kg/m2	50kg/m2
Assembly room 1.3	3. Floor	5.4	3.0	676	750	750	300	round = 360, square = 420	-	300	230		400kg/m2	-
Congress room 1	3. Floor	5.4	4.6	337	300	300	126	round = 136, square = 168	-	150	105		400kg/m2	-
Congress room 2	3. Floor	5.4	4.6	339	300	300	117	round = 144, square = 198	-	150	125		400kg/m2	-
Congress room 3	3. Floor	2.55	-	40	-	30	14	-	-	-	-		400kg/m2	-
Congress room 4	3. Floor	2.55	-	84	-	82	34	-	24	-	-		400kg/m2	-
Congress room 5	3. Floor	2.55	-	40	-	20	-	-	-	10	-		400kg/m2	-
Congress room 6	4. Floor	2.55	-	40	-	38	-	-	-	14	-		400kg/m2	-
Congress room 7	4. Floor	2.55	-	64	-	62	26	-	-	24	-		400kg/m2	-
Congress room 8	4. Floor	2.55	-	30	-	22	-	-	-	10	-		400kg/m2	-
Foyer north	3. Floor	5.4	4.6	287	-	-	-	square = 144, round = 192	-	-	-		400kg/m2	-
Foyer south	3. Floor	5.4	4.6	239	-	-	-	square = 96, round = 112	-	-	-		400kg/m2	-
Roof top terrace	3. Floor	-	-	1981	-	-	-	-	-	-	-		450kg/m2	-
BUILDING 2														
Hall 2.0	UG	10	7.5	5200	3120	2000	1000	1700	-	-	-		2000kg/m2	50kg/m2
Hall 2.1	GF	5.3	3.5	2370	-	-	-	-	-	-	-		750kg/m2	50kg/m2
Hall 2.2	1. Floor	10	7.5	5200	3240	2000	1000	1700	-	-	-		750kg/m2	50kg/m2
BUILDING 3														
Hall 3.0	UG	10	7.5	7430	4200	4000	2000	3400	-	-	-		2000kg/m2	50kg/m2
Hall 3.1	GF	5.3	3.1	1060	1000	-	-	-	-	-	-		750kg/m2	50kg/m2
Hall 3.2	1. Floor	10	7.5	7430	4200	4000	2000	3400	-	-	-		750kg/m2	50kg/m2
BUILDING 7														
Curling hall 7.1	GF	10.8	7.1	1800	1800	-	-	-	-	-	-		500kg/m2	On request
OUTDOOR AREA														
Outdoor Area	GF	-	-	100000	-	-	-	-	-	-	-		-	-

If you have any questions, please do not hesitate to contact us!

# QUICK AND EASY TO REACH

## ARRIVAL BY PLANE

- Bern-Belp Airport (8 km):  
by car 15 minutes, by train 35 minutes
- Basel Mulhouse Freiburg Airport (100 km): 80 minutes by car, 90 minutes by train
- Zurich Airport (130 km):  
by car 90 minutes, by train 80 minutes
- Geneva Airport (160 km): 2 hours by car, 110 minutes by train

## ARRIVAL BY PUBLIC TRANSPORT

- Tram No. 9 to the «Guisanplatz Expo» or «Wankdorf Center» stop
- S-Bahn number S1 / S2 / S3 / S4 / S31 / S44 to the Wankdorf stop, followed by the S-Bahn number S1 / S2 / S3. Tram No. 9 to Wankdorf Center or Guisanplatz Expo station

## ARRIVAL BY CAR

- The BERNEXPO site is located a few hundred metres from the Wankdorf motorway junction (A1, A6 and A12, signs "BERNEXPO" and "expo"). Depending on the event, up to 2,500 parking spaces are available to your guests on the BERNEXPO site.





# THE FESTHALLE – A PIONEER FOR THE FUTURE

OPEN  
SINCE  
2025

## SMALL, MEDIUM, LARGE

A venue for events of every format. We have a solution for any event format in a wide range of sizes – either as a standalone event in the congress centre or an event involving thousands of participants spread across different buildings.

## EVENT TECHNOLOGY

An LED wall that can be extended from 15 to 26 metres or divided up again, a modular stage that can be lowered into the floor or 15 grandstand elements that can be extended or stowed away like an accordion.

## HOSPITALITY

Convenient services that ensure full satisfaction are important to us, so we would also be happy to take care of your shuttle transport, look after your speakers in suitable rooms, and provide artists' dressing rooms or interpreting services.

## SMART FURNITURE

Smart furniture fulfils a range of functions. A counter that was previously used for serving coffee can now be used as a high table for workshops. This gives our customers more space and flexibility at their events, and we can more quickly convert rooms to different settings.

## LOGISTICS MADE SIMPLE

Most of our spaces can be traversed by vehicles weighing tens of tonnes or can be reached using simple material lifts. A vehicle access management tool is also available for deliveries to large events to ensure that materials can be supplied without queuing and wait times.



# ENJOYMENT – REGIONALLY ANCHORED

## **SCORE POINTS WITH OUR GOURMET OFFER**

With our catering partner, we rely on fresh baked goods from Ängelibeck in Köniz or the Bohnenblust bakery in the Breitenrain district. The trout come from the Rubigen fish farm and the high-quality Swiss beef is sourced from local butchers, who guarantee a holistic use of the animal.

Regionality and sustainability are very important to us, especially when it comes to congress catering. We want you not only to eat well with us, but also to take home a good feeling. With our commitment to the region and the environment, we would like to make a valuable contribution together with you.





# WE LIVE SUSTAINABILITY

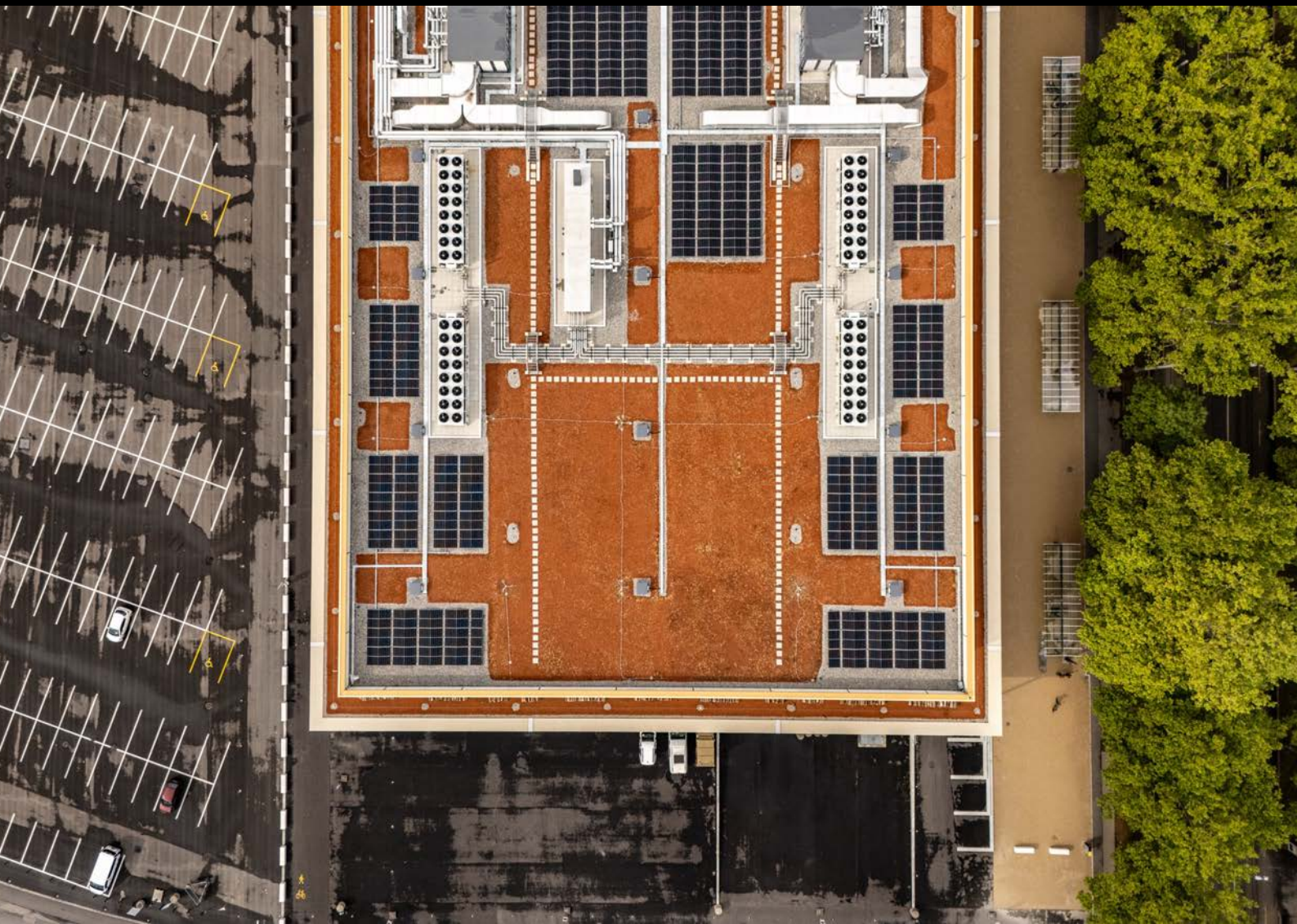
## **CAN EVENTS BE SUSTAINABLE AT ALL? – YES!**

We face this area of tension every day and the topic of sustainability is a matter close to our hearts and not just a concept phrase. The topic is not only a top priority internally, but also flows into every project and receives the greatest possible attention in all our implementations.

When we look out of our office windows, a beautiful green lung presents itself in front of us. These Bernese commons in the northern district are an incentive to ensure that these green spaces remain a place of recreation for many people of different generations and backgrounds.

We are in a great location with this beautiful piece of nature on our doorstep. We are not only allowed to use it for our trade fair and event business, but at the same time we are also given the responsibility to protect it and always do the right thing.

In theory, all this certainly sounds fantastic. But we can also do things in practice: In addition to participating in the Swisstainable sustainability program and obtaining ISO 20121 certification, the BERNEXPO GROUPE is already involved in many other areas and associations and is aiming for further projects. The BERNEXPO GROUPE, for example, is a member of the Energy Saving Alliance and is on board with Sustainable Switzerland. We are also involved in the Climate Platform.





# QUALIFIED ON MANY STAGES



## HEALTH CARE VENUE

BERNEXPO has qualified as an event venue for customers from the healthcare sector and conducts annual training courses on all aspects of the pharmaceutical and healthcare industry in order to know the respective regulatory and legal framework conditions for events in this area and to anticipate them accordingly in the planning and implementation of events.

Our staff is also tested and qualified in this regard and knows the regulations. We are proud of this award – and as a venue we are listed with the Health Care Venues organisation.



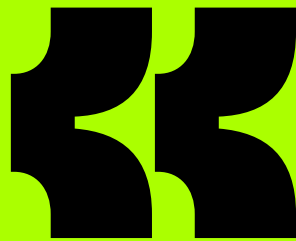
## SUSTAINABLE CONSTRUCTION

The construction of the Festhalle is being carried out with the greatest care and a clear focus on sustainability. Thanks to the Minergie-P standard, the new building complex plays a pioneering role in terms of energy efficiency in the trade fair and event landscape. The festival hall is operated without fossil fuels and has a modern photovoltaic system.



## ISO CERTIFIED

As one of the first venues in Switzerland, BERNEXPO is very proud to have received ISO 20121 certification in 2023. This sets out the requirements for a sustainability management system for events or event-related activities and provides guidance on how to comply with these requirements.



# A GUEST IN THE HEART OF SWITZERLAND

**WELCOME BERN.  
HELLO WORLD.**



# BERN – CENTRAL AND UNIQUELY BEAUTIFUL

## CONNECTION SECURED

Bern can be reached directly from all neighbouring countries – including by plane

## HISTORIC OLD TOWN

The UNESCO World Heritage Site with its unique arcades is an extremely popular promenade

## IN THE MIDDLE OF IT ALL

Bern is the political centre of Switzerland and, as a federal city with a central location, is well developed

# BERN

3h to Paris

3h to Munich

Bern

3h to Milan

## CUISINE AND HOSPITALITY

You will find over 300 restaurants, bars and cafés in the most beautiful locations

## CULTURAL

The city offers a very varied and attractive cultural program

## BILINGUALISM AND BRIDGING FUNCTION

Its proximity to French-speaking Switzerland makes Bern a city of openness and dialogue

Geneva

# HOTEL CAPACITIES: PREPARED FOR ANYTHING

## PROXIMITY BRINGS COMFORT

Bern can also take advantage of its central location in terms of accommodation. The city of Bern alone has 2,700 rooms, all of which are within a 10-minute radius of each other. And if tens of thousands more rooms are needed, the distances will remain extremely pleasantly short. Even a metropolis of millions cannot keep up so quickly, because traffic congestion is omnipresent and unpredictable.

## QUALITY IN ALL CATEGORIES

Whether it's a 2-star hotel or top-class accommodation, Swiss quality standards can be felt in all categories and ensure appropriate comfort for our customers' guests.

**CITY OF BERN** total of 2'700 rooms – 10 minutes

**REGION OF BERN** plus 2'600 rooms – 30 minutes

**OTHER REGIONS** plus 3'500 rooms – 45 minutes

**DESTINATIONS** > 20'000 rooms – 60 minutes

Bern City

Bern Region

Adjacent regions

Destinations  
max. 1h away



# CONTACT

**BERNEXPO AG**

Mingerstrasse 6  
Postfach  
CH-3000 Bern 22

+41 31 340 11 11

[events@bernexpo.ch](mailto:events@bernexpo.ch)

[www.bernexpo.ch](http://www.bernexpo.ch)

